

THERMOWASHER

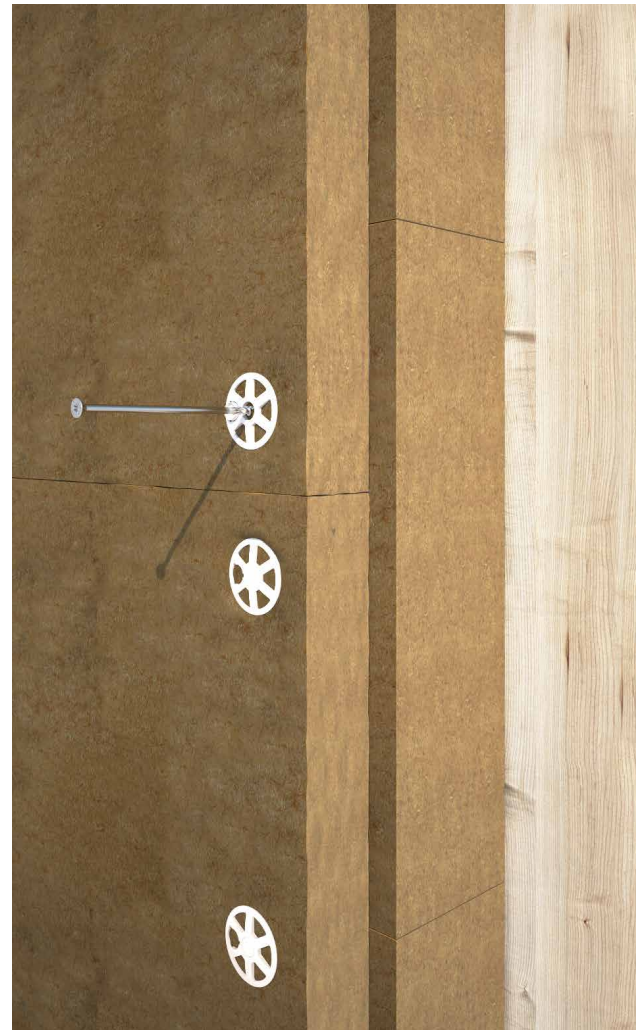
WASHER TO FASTEN INSULATION TO TIMBER

CE FASTENING WITH HBS SCREWS

The thermowasher is intended for use with screws with the CE marking in accordance with ETA. Ideal for Ø6 or Ø8 HBS screws, with lengths based on the thickness of the insulation to be fastened.

ANTI-THERMAL BRIDGE

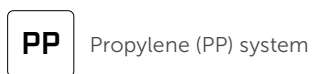
Incorporated hole cover to avoid thermal bridges. Large cable spaces for proper plaster adhesion. Has a system that prevents the screw from pulling out.



SERVICE CLASS



MATERIAL



CODES AND DIMENSIONS

CODE	d _{SCREW} [mm]	d _{HEAD} [mm]	thickness [mm]	depth [mm]	pcs
THERMO65	6÷8	65	4	20	700



FIELDS OF USE

The propylene washer with an external diameter of 65 mm is compatible with 6 and 8 mm screw diameters. Suitable for all types of insulation and all fixture thicknesses.